

KETTAL

Object

Club Armchair

Designer

Doshi Levien

Collection

Kettal Cala

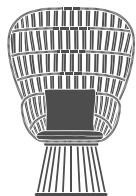
Reference

27200453Y0



Dimensions

(cm / inch)



1105,2 41,4"1



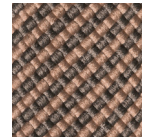
182,5 32,4"1

152,3 59,9"

39,3 15,4"

Standard Finishes

Bela rope



453

Honeysuckle

Terrain Paint



729

London Clay

Terrain Fabrics



292

Limestone Laminate

Materials

Bela Ropes

Antioxy, Resist U.V, En-581-4, Easy Clean

Fabric

Heavy Load 100.000 Cycles, Heavy Load Resistant 1000 Decitex, Kettalize-It, Resist U.v. En-581-4, Easy Clean, Abrasion, Resistance 30.000 Cycles, Quickdry

Aluminium

Antioxy, Heavy Load, Resistant En-1421, Kettalize-It, Anti-Scratch, Easy Clean, Flame Retardant M1, Eco Friendly Ecoembes Recycling Process

Optional Colours

Aluminium, Fabrics, Laminate Fabrics, Bela Ropes

Characteristics

Frame

Units box 1

Box Weight 27 kg / 59,52 Lbs

Box Volume 1,2 m³ / 42,37 cft.

Seat cushion

Units box 1

Box Weight 1,5 kg / 3,30 Lbs

Box Volume 0,01 m³ / 0,35 cft.

C.O.M. 0,4