

Base Kitchen  
Sink top,  
by Kettal Studio

**kettal**

# Sink top

Designer  
Kettal Studio

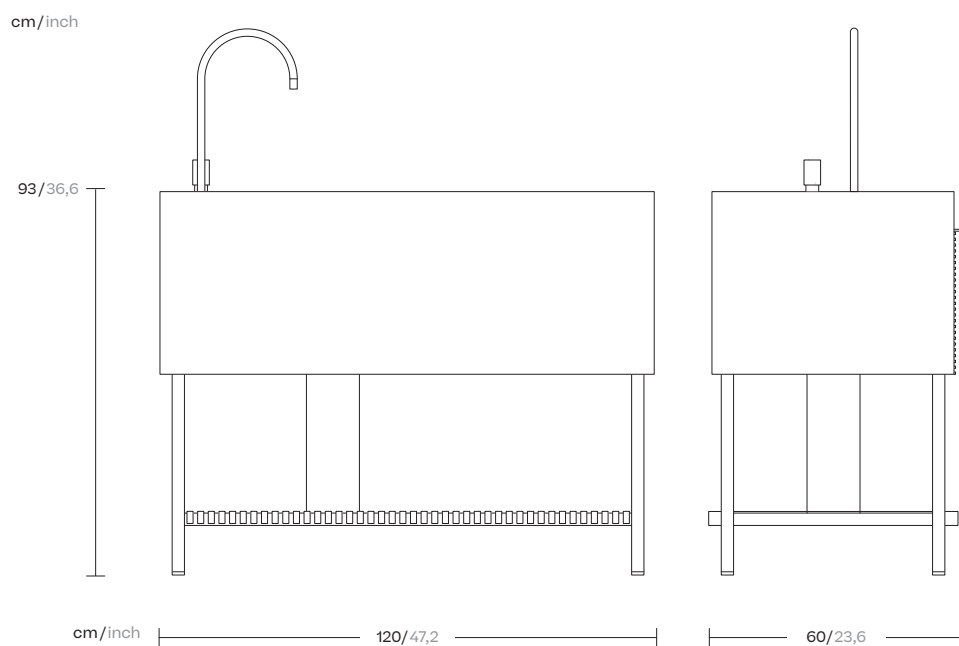
Collection  
Kitchen

Reference  
KSA602200

1/3

This modular kitchen structure offers infinite solutions. An aluminium supporting frame can be teamed with a number Materials of stoneware modules in various combinations whilst maintaining its authentic linear design.

This design features clean, smooth surfaces, with no corners, for easy cleaning and maintenance.



kettal

# Sink top

Designer  
Kettal Studio

Collection  
Kitchen

Reference  
KSA602200

2/3

## Materials

Aluminium  
Antioxy, Heavy Load, Resistant  
En-1421, Kettalize-It, Anti-  
Scratch, Easy Clean, Flame  
Retardant M1, Eco Friendly  
Ecoembes Recycling Process

Teak  
Eco-friendly, A-grade

Ceramic

## Maintenance

Clean with mild soap using  
sponge or cloth. Be gentle  
while cleaning, do not scrub  
aggressively the fabric. Once  
cleaned please make sure you  
remove soap excess.  
In case of aggressive stains  
clean with diluted household  
bleach.  
Clean stains promptly. The  
longer it remains, more difficult  
will be to remove.

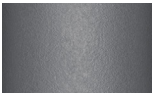
Once cleaned the fabric steam  
iron the fabric. Just use steam,  
be carefull NOT placing the  
iron directly in the fabric it will  
get damage.

## Structure Colour Options

## Terrain Coatings



Slate Stone  
01C



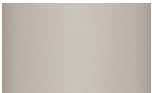
Mysty Smoke  
02C



Ash  
03C



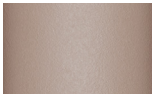
Bone  
04C



Tuff  
05C



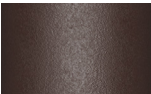
Wet Stone  
06C



Sand Dune  
07C



Dry Clay  
08C



Arabica  
09C



Sepia  
19C



Rose Canyon  
16C



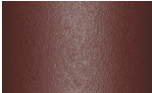
Blossom  
20C



Ruby Dust  
18C



Sunset Glow  
17C



Terrarosa  
15C



Terracota  
14C



Amber  
13C



Ginger Root  
12C



Desert Storm  
11C



African Savannah  
10C



Spring Meadow  
28C



Kombu  
29C



Forest Stream  
27C



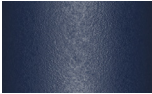
Sea Moss  
26C



Glacier Ice  
25C



Polar Sky  
24C



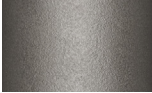
Nightfall  
23C



Indigo  
22C



Wild Lupin  
21C



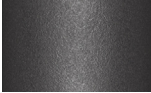
Galena  
33C



Bronze  
30C



Corten  
31C



Manganese  
32C

# Sink top

Designer  
Kettal Studio

Collection  
Kitchen

Reference  
KSA602200

3/3

## Other Characteristics

 Adjustable legs

Includes matte black faucet and water heater.  
The installation requires a water inlet and water water otlet.  
The client must provide these services.

## Colour Options

## Wood



Teak



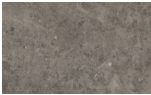
Iroko

## Top Colour Options

## Ceramics



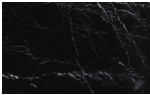
Ceppo di Gre  
881



Du Gent Grey  
CM2



Neutral Caliza  
CM3



Royal Black  
CM4