

# Candleholder Ø21 by Patricia Urquiola

kettal

# Candleholder Ø21

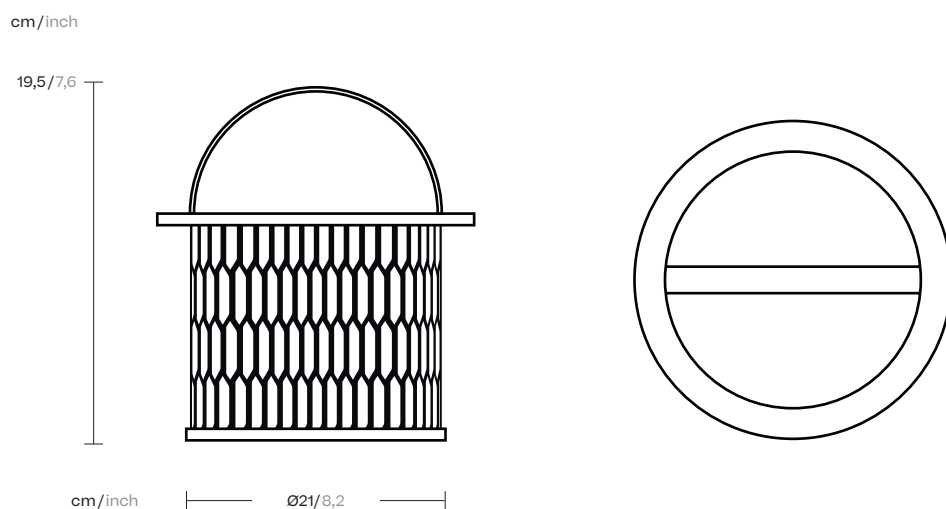
Designer  
Patricia Urquiola

Collection  
Objects

Reference  
KS5701100

1/2

Because spaces come to life through the objects that adorn them, Kettal has developed a range of exterior decoration and design products.



kettal

# Candleholder

## Ø21

Designer  
Patricia Urquiola

Collection  
Objects

Reference  
KS5701100

2/2

### Materials

Aluminium  
Antioxy, Heavy Load, Resistant  
En-1421, Kettalize-It, Anti-  
Scratch, Easy Clean, Flame  
Retardant M1, Eco Friendly  
Ecoembes Recycling Process

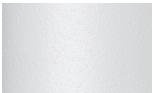
### Maintenance

Clean with mild soap using  
sponge or cloth. Be gentle  
while cleaning, do not scrub  
aggressively the fabric. Once  
cleaned please make sure you  
remove soap excess.  
In case of aggressive stains  
clean with diluted household  
bleach.  
Clean stains promptly. The  
longer it remains, more difficult  
will be to remove.

Once cleaned the fabric steam  
iron the fabric. Just use steam,  
be carefull NOT placeing the  
iron directly in the fabric it will  
get damage.

### Legs Colour Options

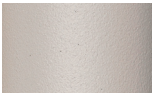
### Terrain Paints



Chalk  
721



Bone  
678



Tuff  
103



Mist  
773



Flint  
734



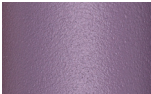
London Clay  
729



Mahogany  
100



Carbon  
737



Lilac  
104



Feldspar  
082



Sepia  
088



Terra Rossa  
087



Magma  
086



Terracota  
085



Sahara  
139



Camomile  
106



Aquamarine  
107



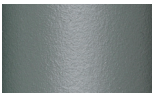
Cobalt  
089



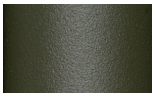
Indigo  
094



Jade  
091



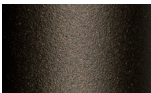
Onyx  
101



Juniper  
092



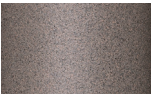
Amazon  
102



Bronze  
093



Corten  
727



Claystone  
741



Sand Storm  
132



Pumice  
131



Galena  
105



Manganese  
726