

Base Kitchen
Cook,
by Kettal Studio

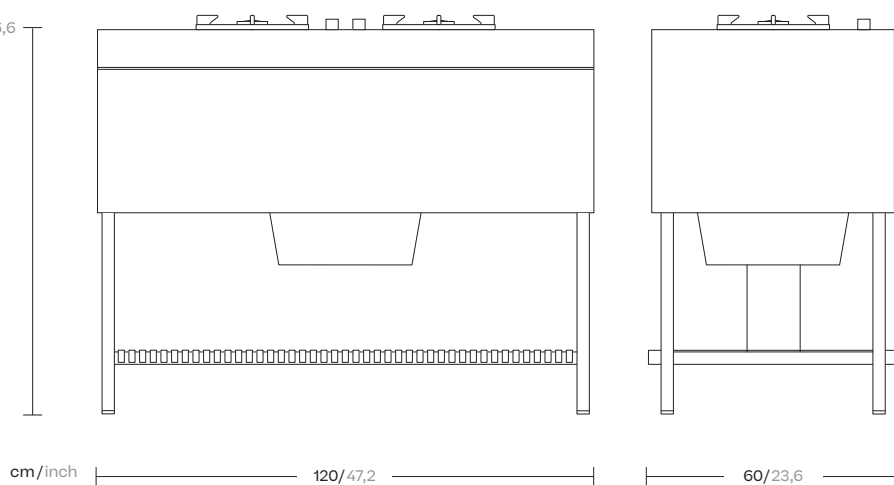
kettal

This modular kitchen structure offers infinite solutions. An aluminium supporting frame can be teamed with a number Materials of stoneware modules in various combinations whilst maintaining its authentic linear design.

This design features clean, smooth surfaces, with no corners, for easy cleaning and maintenance.

cm/inch

93/36,6



Materials

Aluminium
Antioxy, Heavy Load, Resistant
En-1421, Kettalize-It, Anti-
Scratch, Easy Clean, Flame
Retardant M1, Eco Friendly
Ecoembes Recycling Process

Teak
Eco-friendly, A-grade

Ceramic

Maintenance

Clean with mild soap using
sponge or cloth. Be gentle
while cleaning, do not scrub
aggressively the fabric. Once
cleaned please make sure you
remove soap excess.
In case of aggressive stains
clean with diluted household
bleach.
Clean stains promptly. The
longer it remains, more difficult
will be to remove.

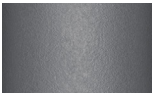
Once cleaned the fabric steam
iron the fabric. Just use steam,
be carefull NOT placing the
iron directly in the fabric it will
get damage.

Structure Colour Options

Terrain Coatings



Slate Stone
01C



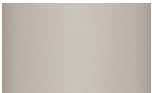
Mysty Smoke
02C



Ash
03C



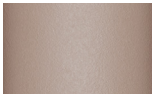
Bone
04C



Tuff
05C



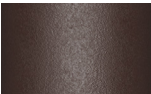
Wet Stone
06C



Sand Dune
07C



Dry Clay
08C



Arabica
09C



Sepia
19C



Rose Canyon
16C



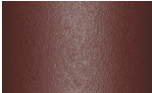
Blossom
20C



Ruby Dust
18C



Sunset Glow
17C



Terrarosa
15C



Terracota
14C



Amber
13C



Ginger Root
12C



Desert Storm
11C



African Savannah
10C



Spring Meadow
28C



Kombu
29C



Forest Stream
27C



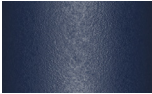
Sea Moss
26C



Glacier Ice
25C



Polar Sky
24C



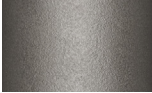
Nightfall
23C



Indigo
22C



Wild Lupin
21C



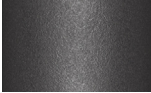
Galena
33C



Bronze
30C



Corten
31C



Manganese
32C

Other Characteristics

 Adjustable legs

Colour Options

Wood



Teak



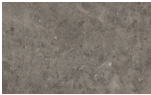
Iroko

Top Colour Options

Ceramics



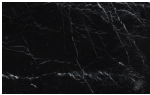
Ceppo di Gre
881



Du Gent Grey
CM2



Neutral Caliza
CM3



Royal Black
CM4